

# The Kensington

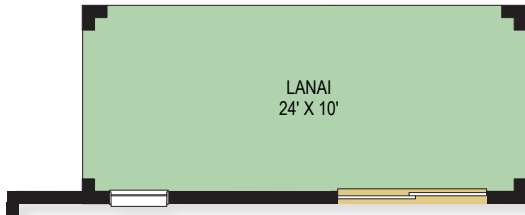
- 4 Bedroom ■ 2 Bath
- 1,900 sq. ft (a/c living)



## SQUARE FOOTAGE – BASE

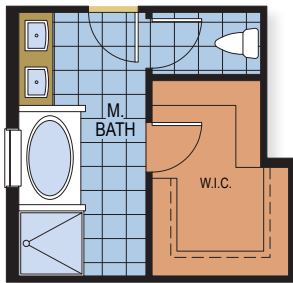
Total A/C Living:	1,900 sq. ft.
Entry Porch:	37 sq. ft.
Covered Lanai:	120 sq. ft.
2-Car Garage:	425 sq. ft.
<b>TOTAL:</b>	<b>2,482 sq. ft.</b>

Optional Extended Covered Lanai

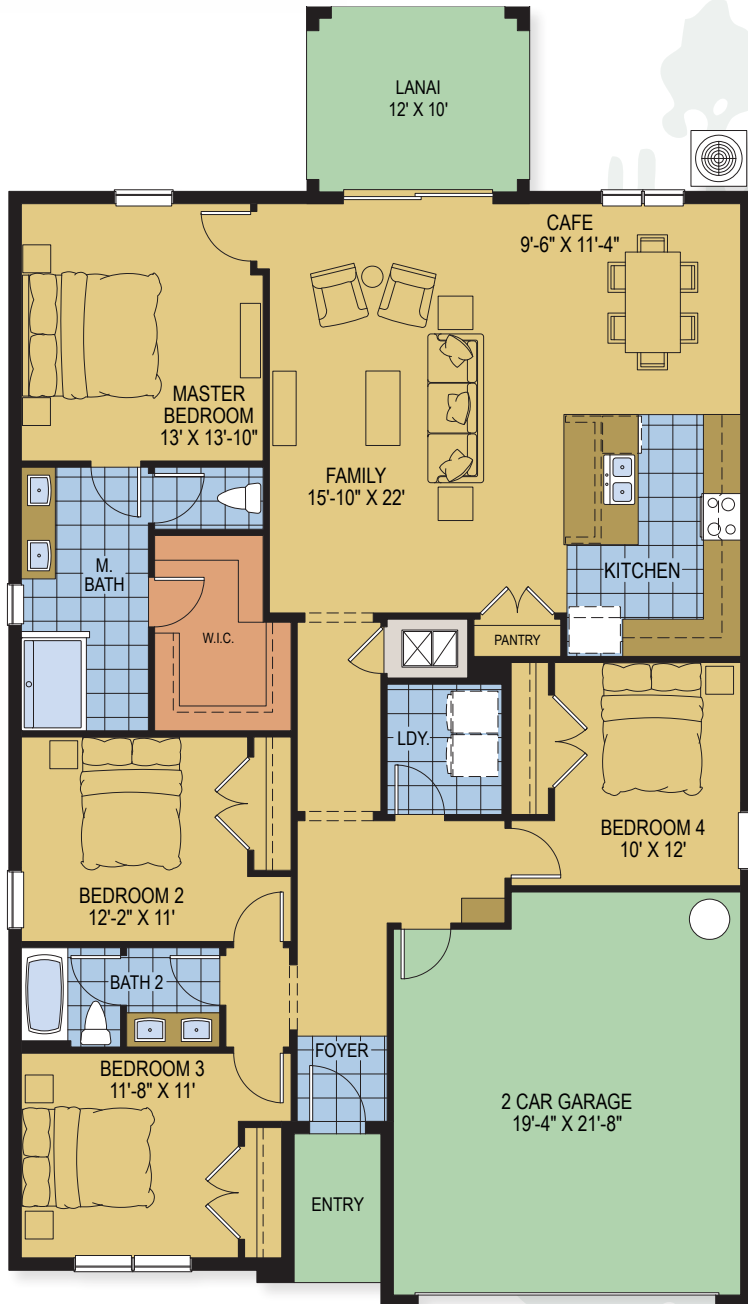


(#00076)

Optional Master Bath Garden Tub



(#00040)



**Our Legacy is Building Yours**



\*Plans and elevations are artist's renderings and may contain options which are not standard and may not be available on all models, model types or homes. Developer reserves the right to make changes to these floor plans, specifications, dimensions and elevations without prior notice. Stated dimensions and square footage are approximate and should not be used as representation of the home's size. Square footage calculations are from the outside of exterior walls and include interior partition walls. Due to normal construction tolerances, square footages and dimensions may vary from those shown on floor plans or otherwise indicated. Furniture layouts are for illustration purposes only. Prices, promotions, features, amenities and availability subject to change without notice. CGC#1507971. Copyright ©2021 Hanover Family Builders. All rights reserved.



# The Kensington

by Hanover Family Builders

Kensington elevation 1 shown optional stone

Elevation 1



Elevation 1 shown w/optional stone



Elevation 2



Elevation 2 shown w/optional stone



Elevation 2 shown with optional cladding



**HANOVER**  
FAMILY BUILDERS

888.842.9266 • [HanoverFamilyBuilders.com](http://HanoverFamilyBuilders.com)



\*Plans and elevations are artist's renderings and may contain options which are not standard and may not be available on all models, model types or homes. Developer reserves the right to make changes to these floor plans, specifications, dimensions and elevations without prior notice. Copyright ©2021 Hanover Family Builders. All rights reserved.